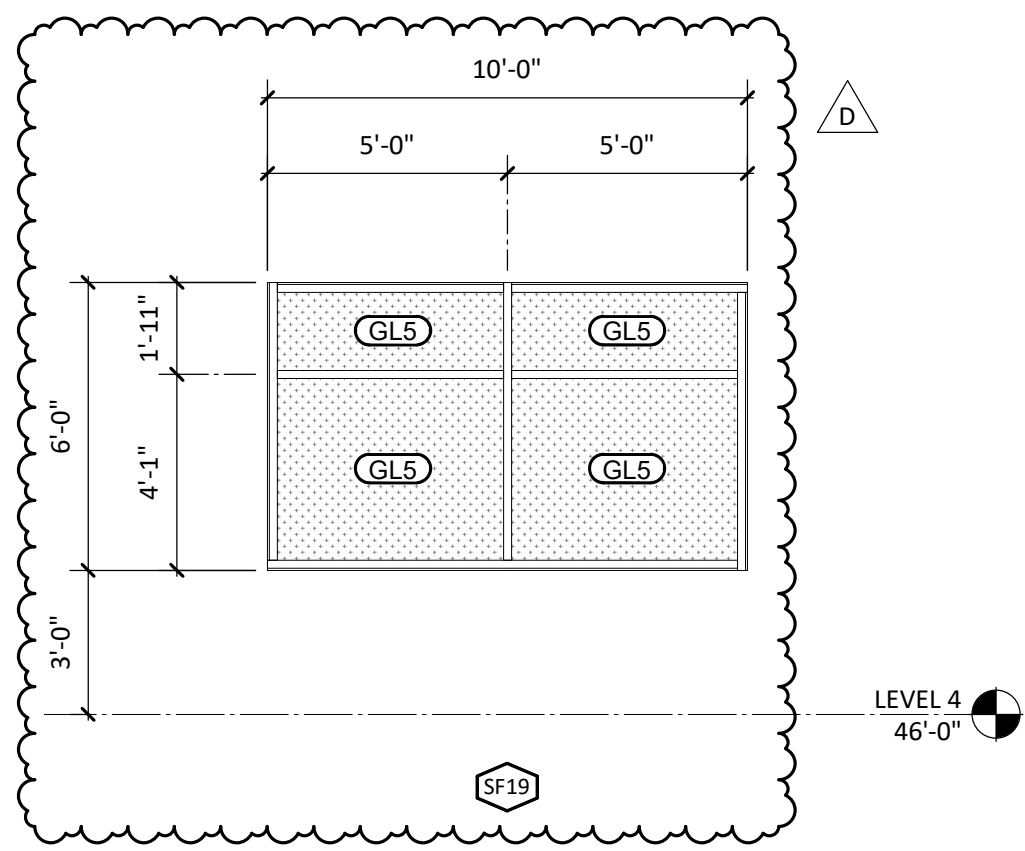


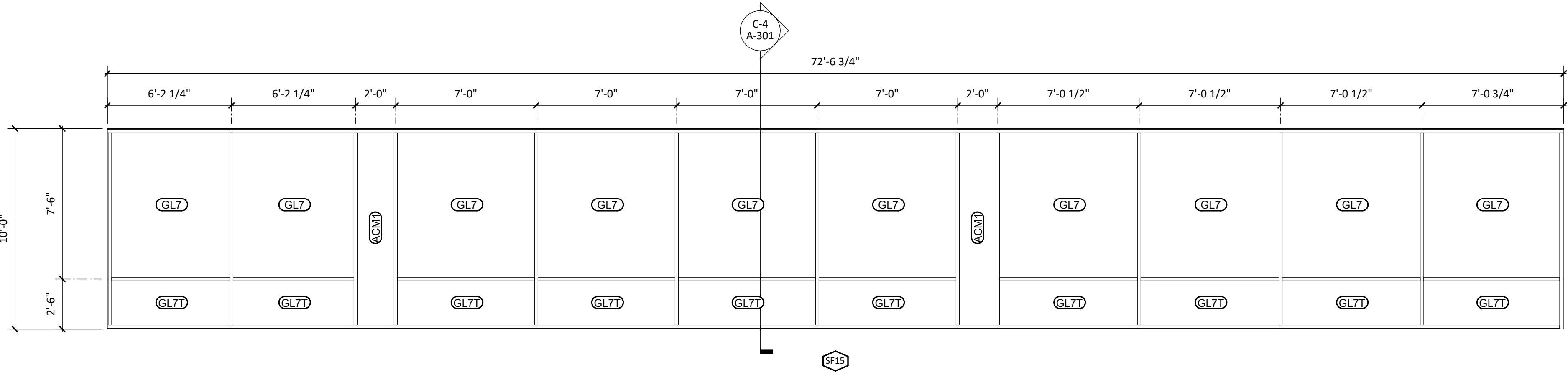
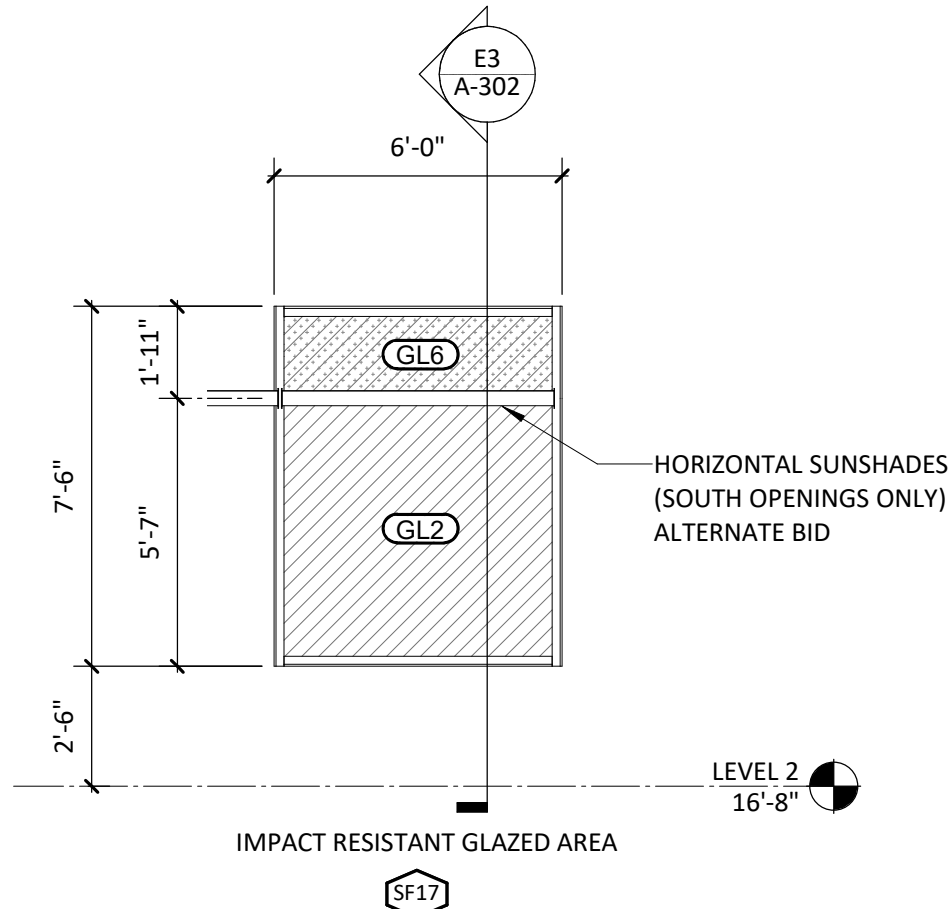
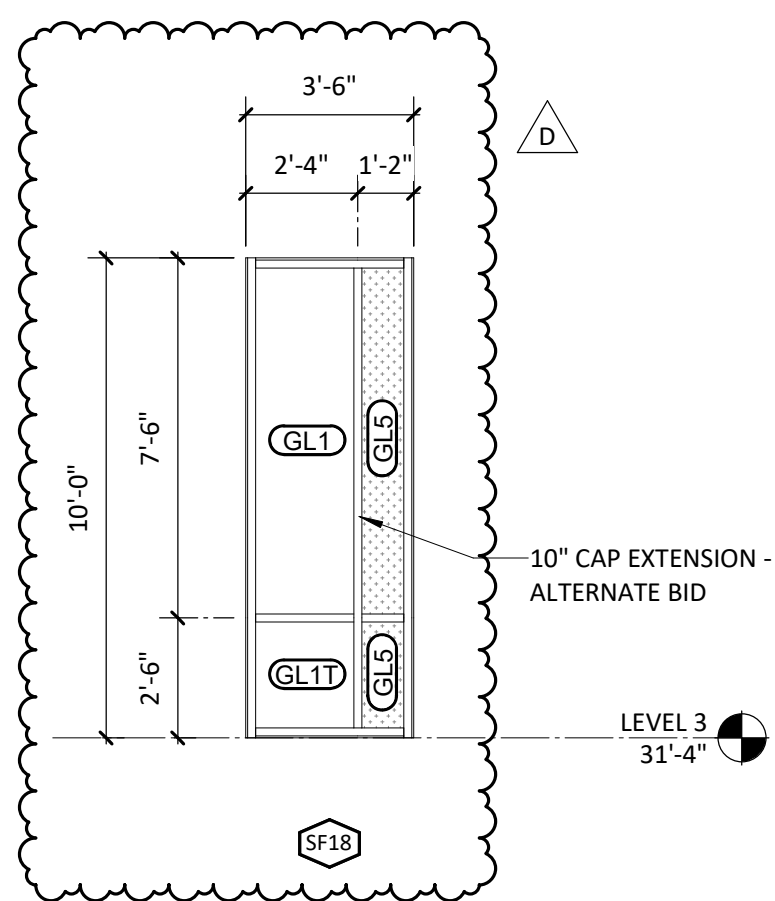
THE LINE SHOWN ABOVE IS  
A FACILITY OVERHUNG AND IS  
NOT TO BE CONSIDERED AS  
THE LINE SHOWN ABOVE IS

E



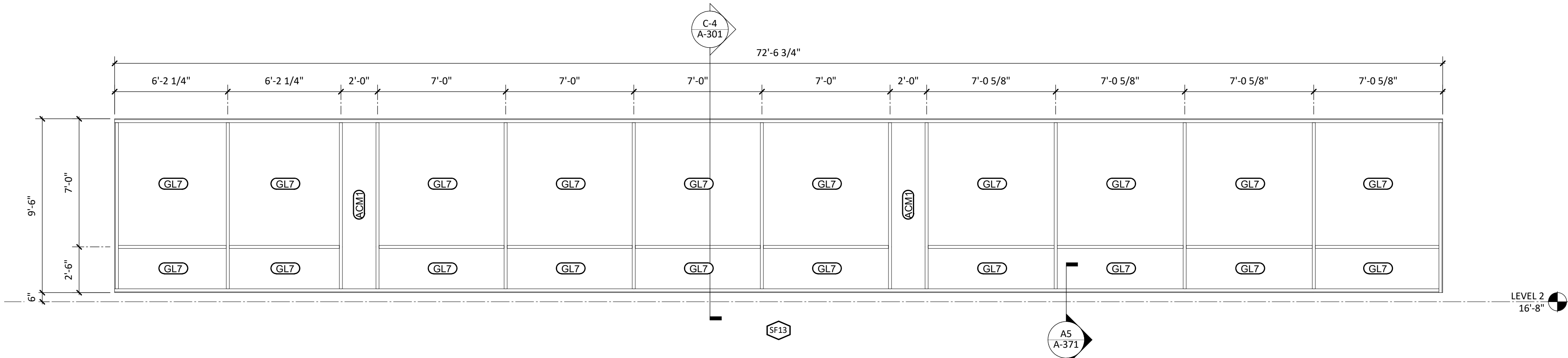
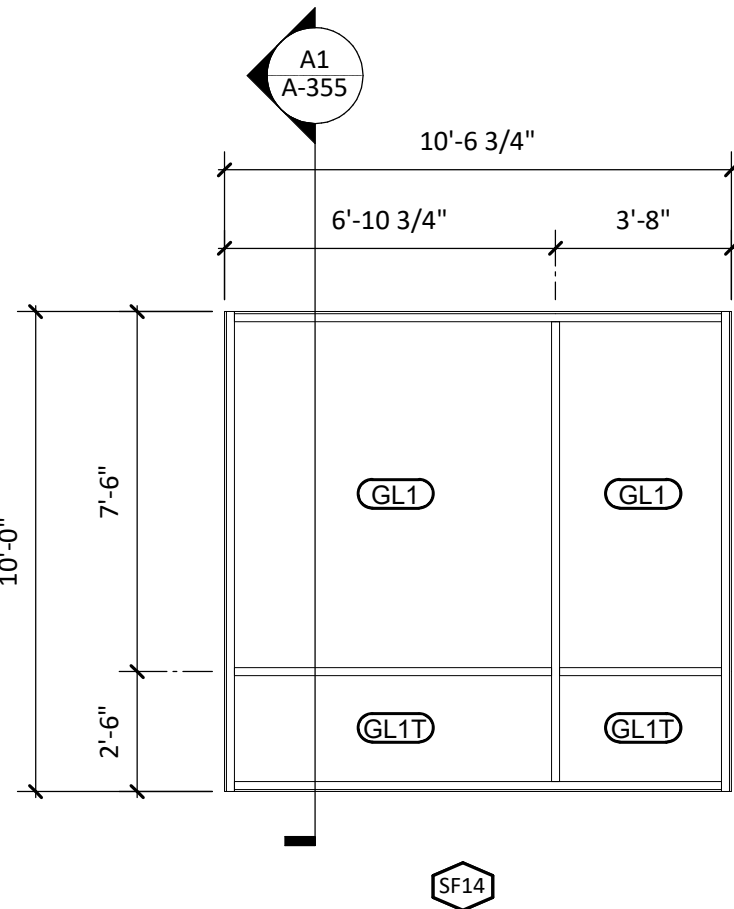
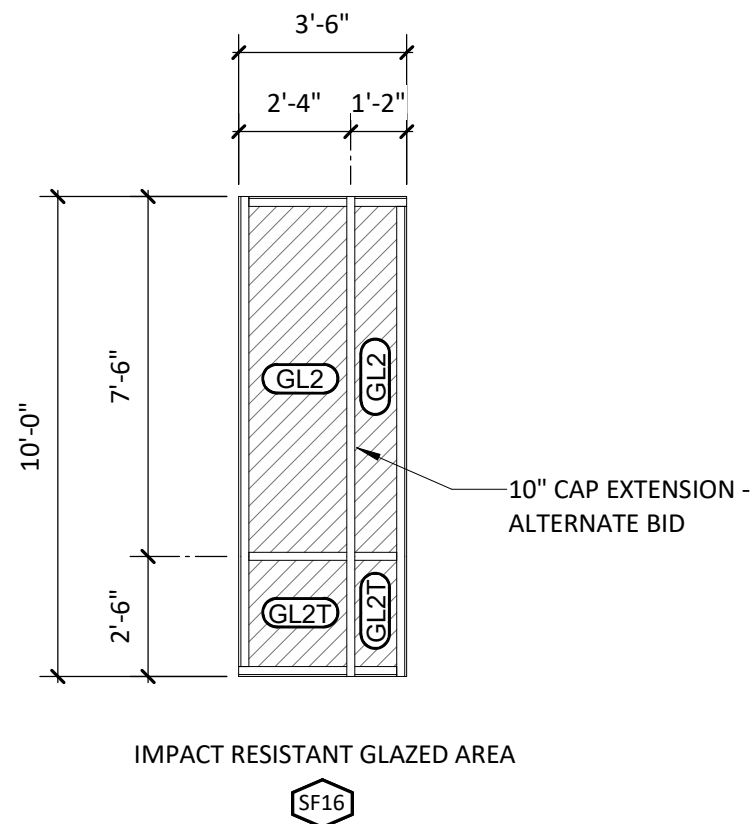
E2	SF19	1/4" = 1'-0"
A-612		

D



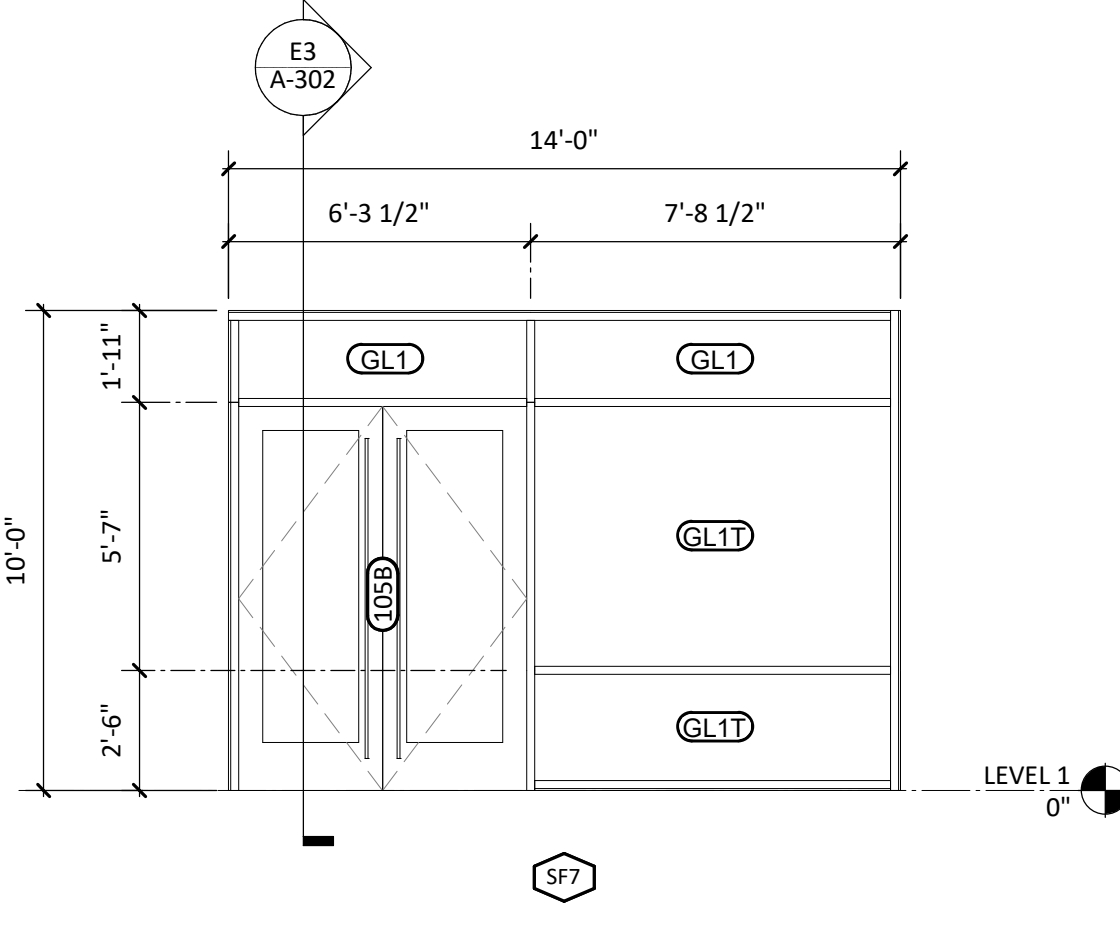
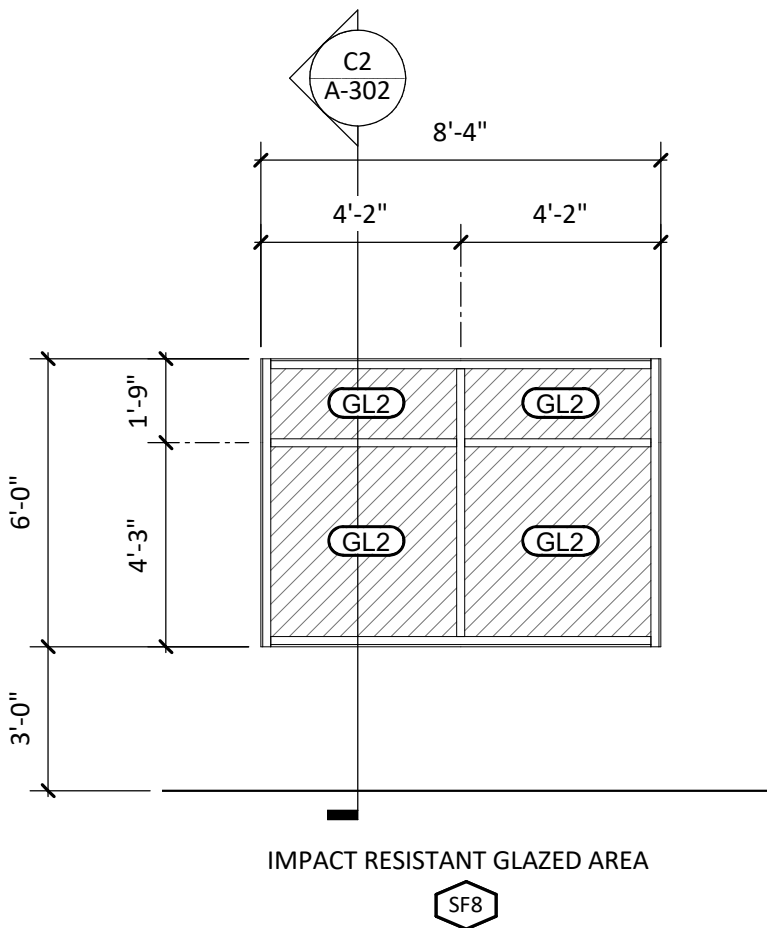
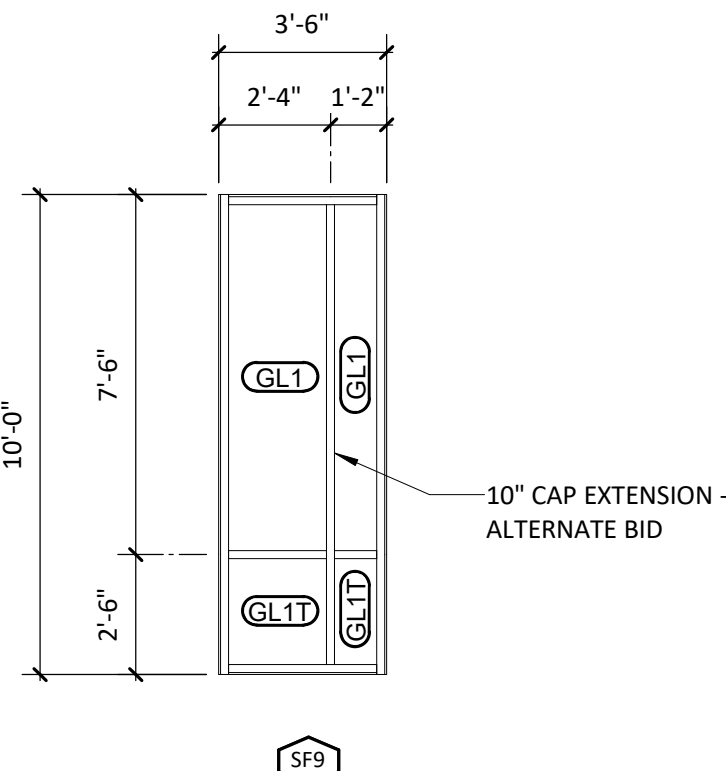
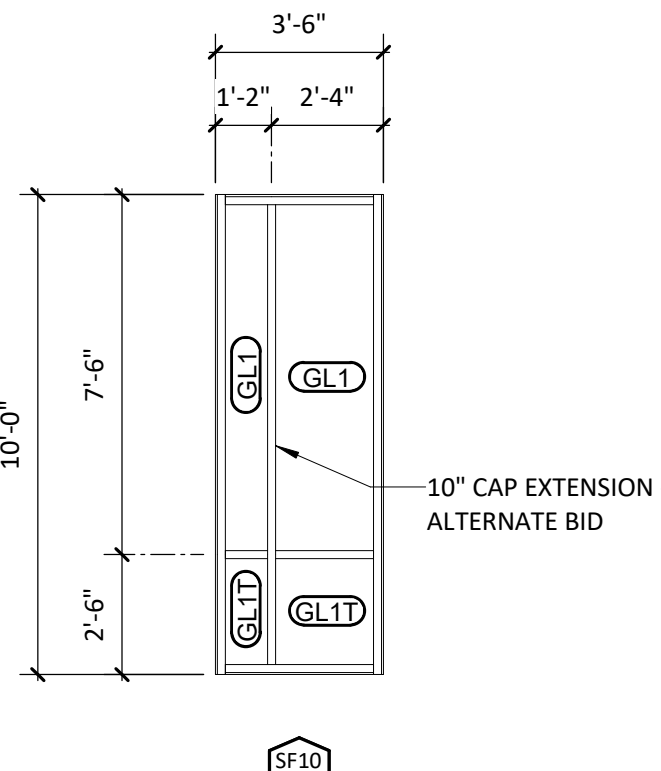
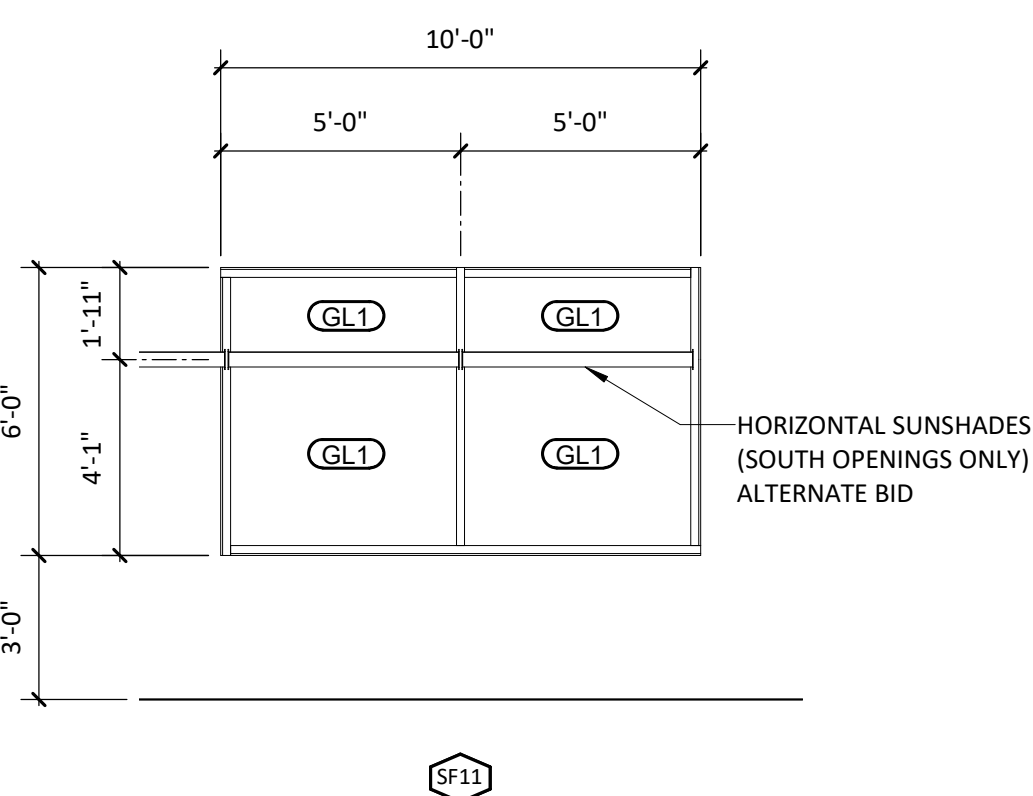
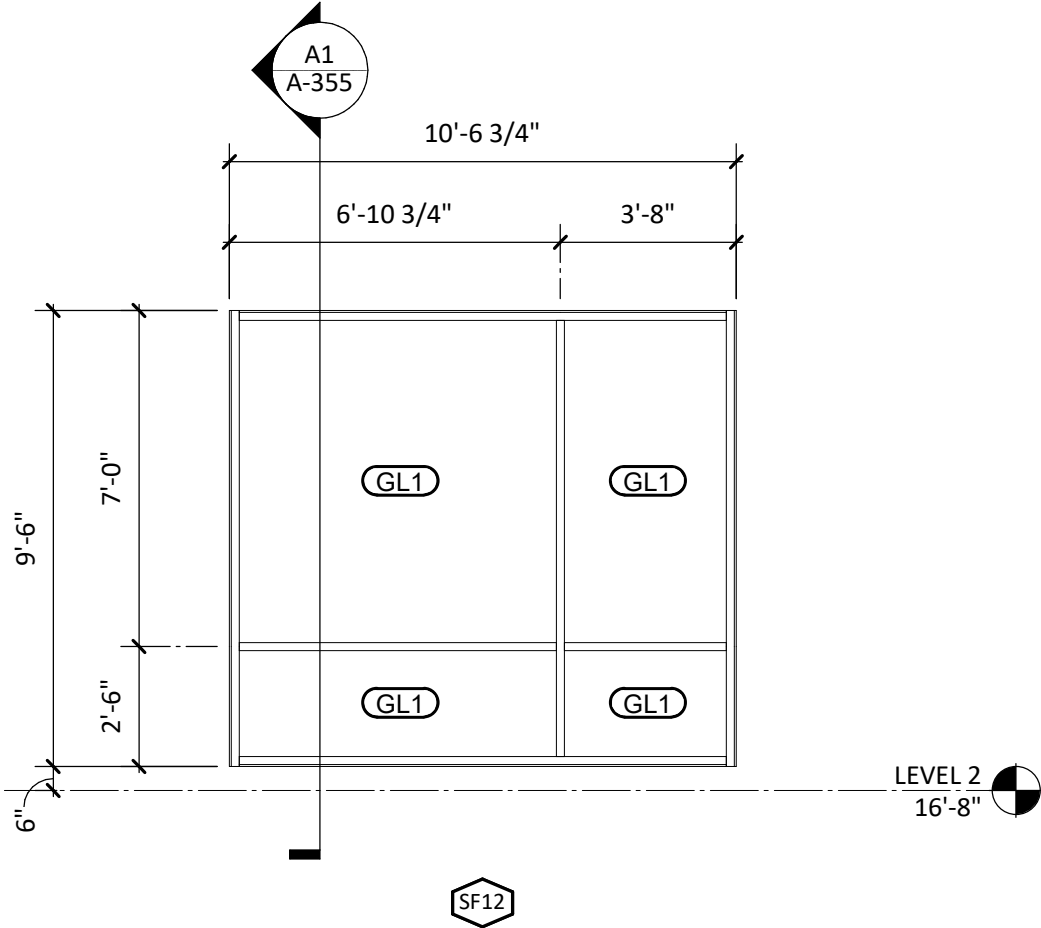
D1	SF18	1/4" = 1'-0"	D2	SF17	1/4" = 1'-0"	D3	SF15	1/4" = 1'-0"
A-612			A-612			A-612		

C



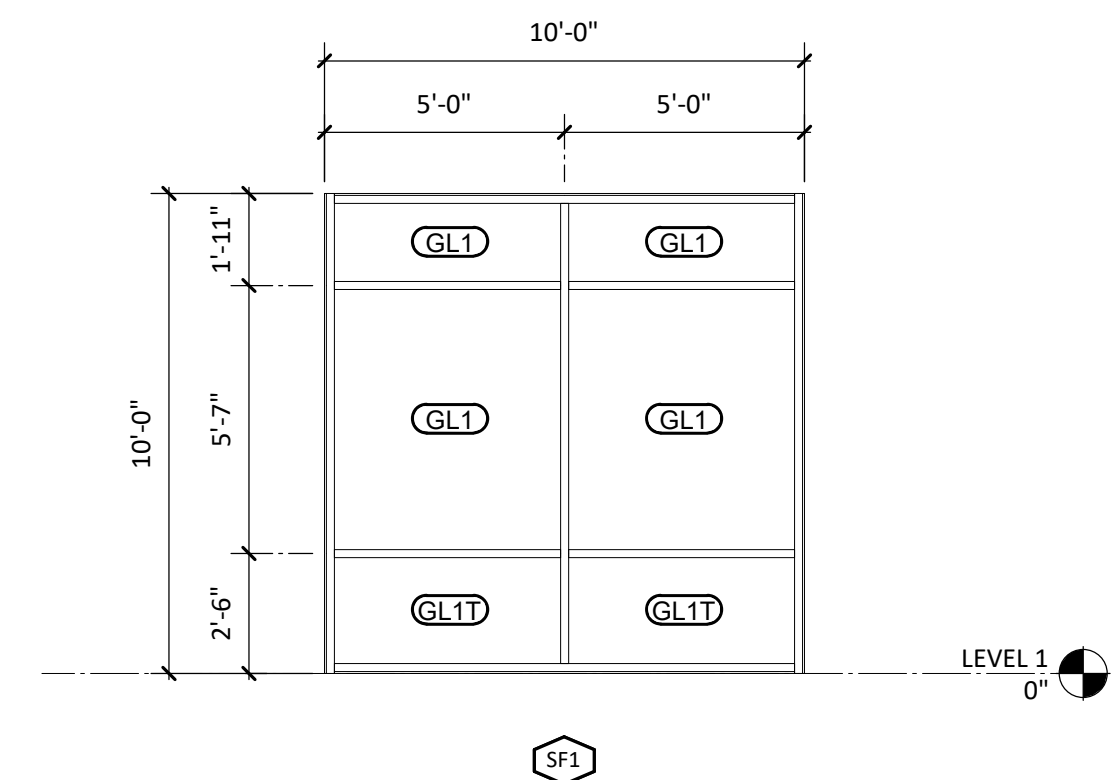
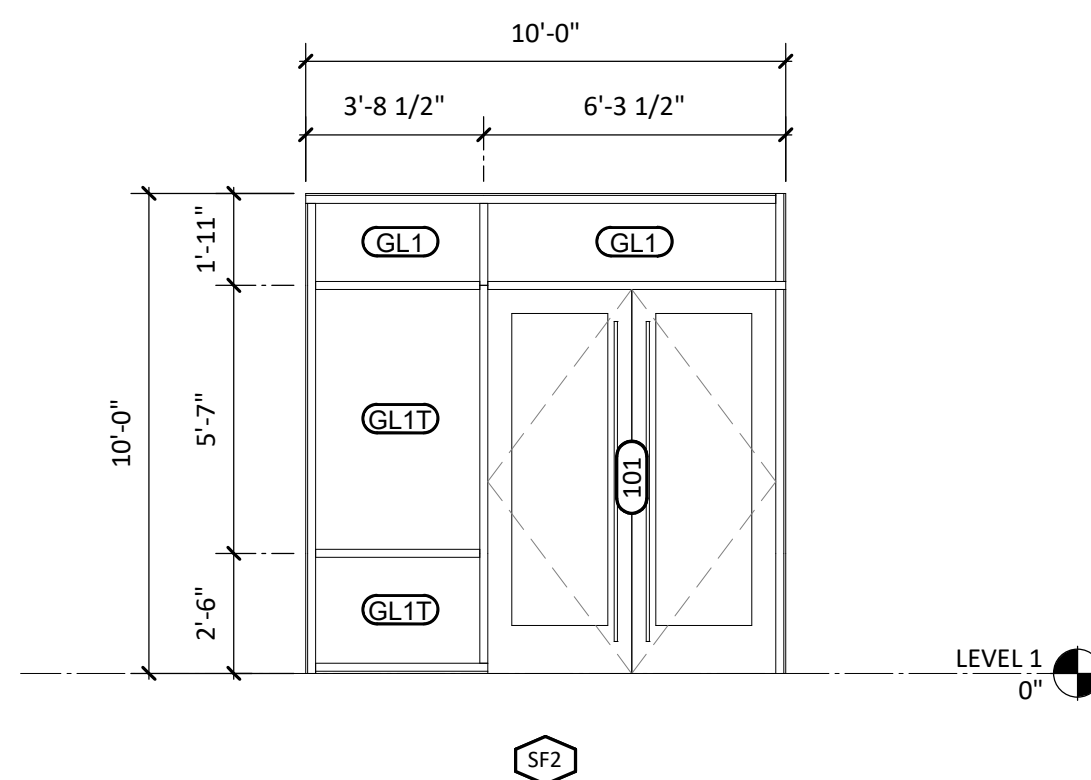
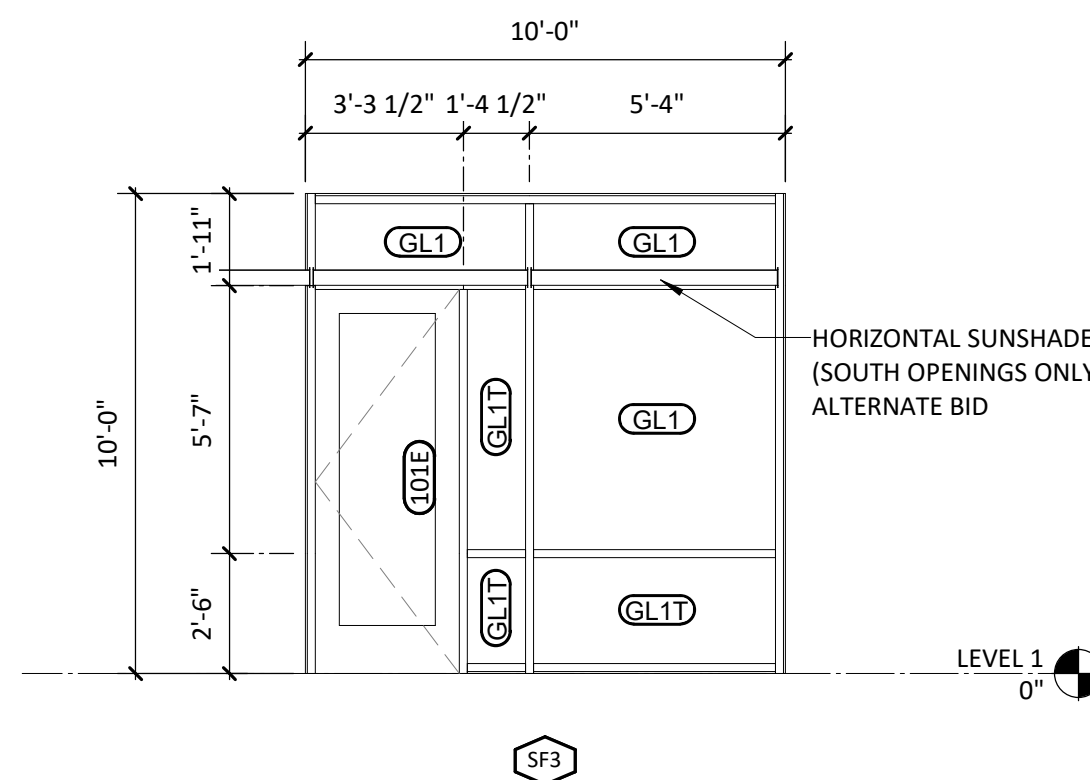
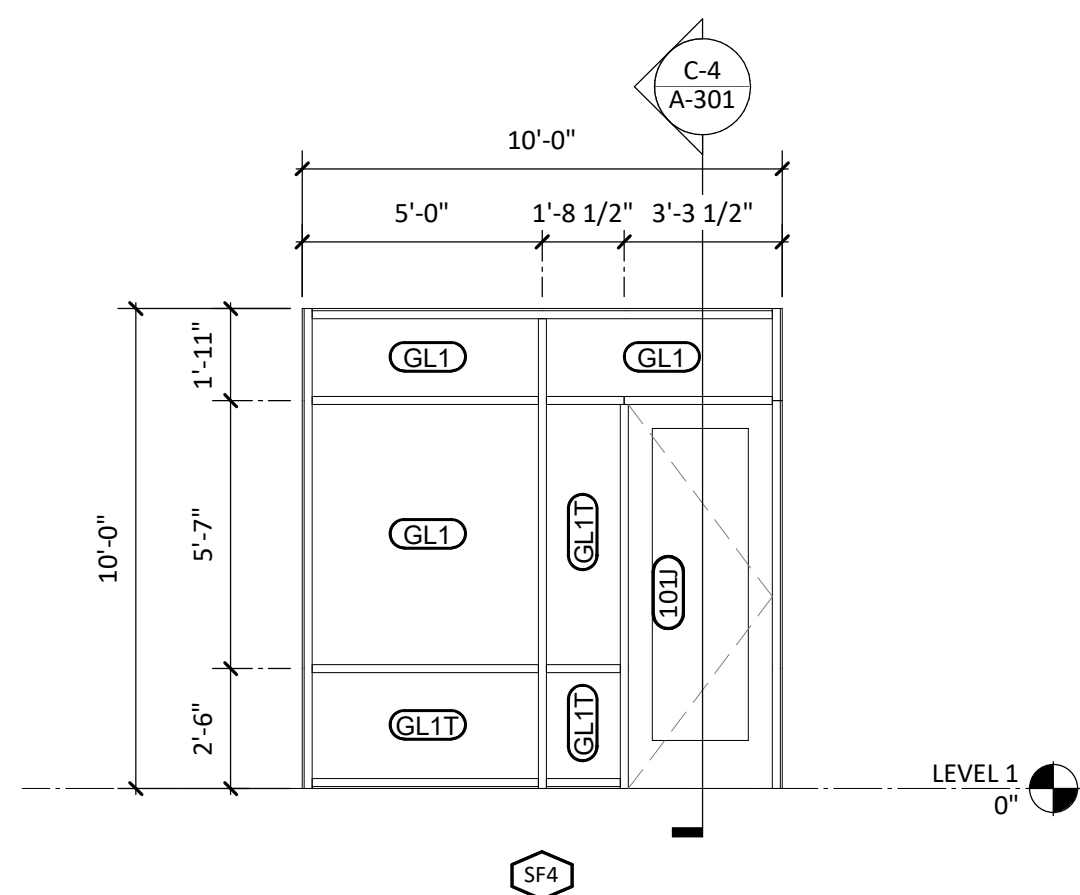
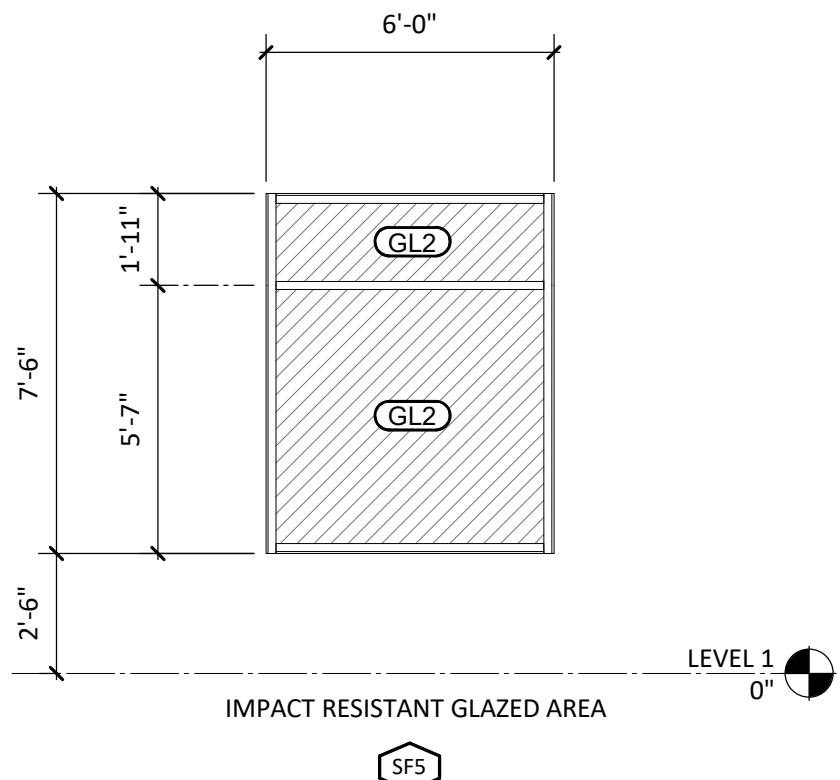
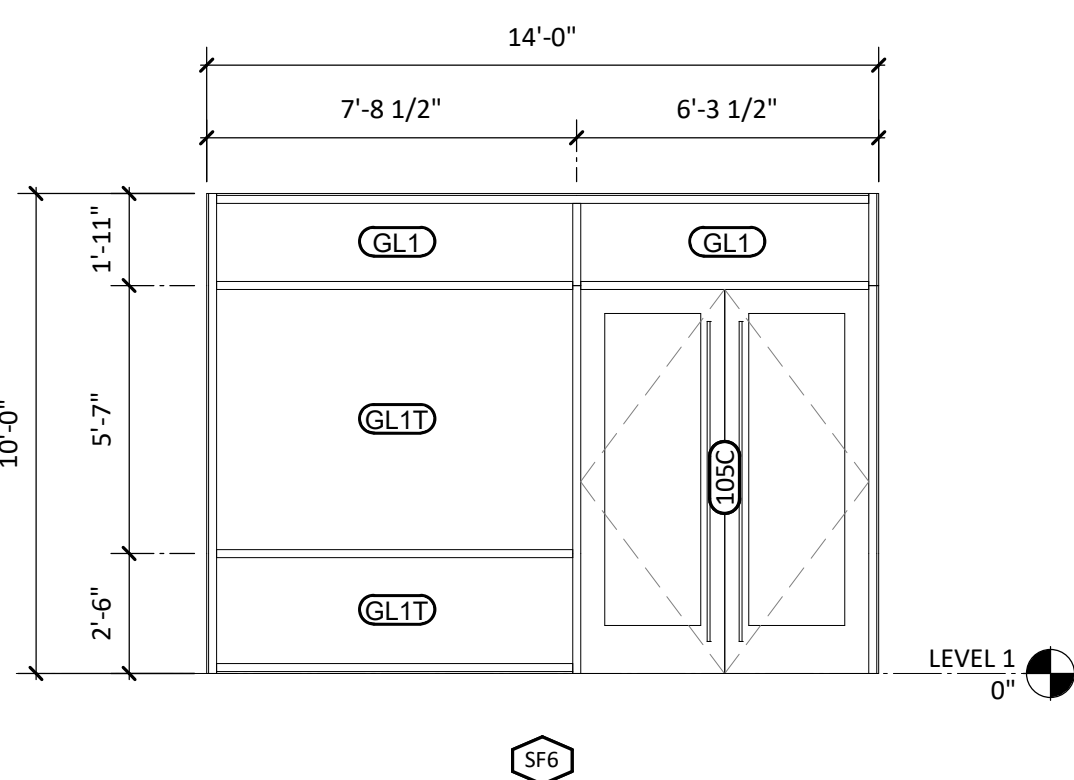
C1	SF16	1/4" = 1'-0"	C2	SF14	1/4" = 1'-0"	C3	SF13	1/4" = 1'-0"
A-612			A-612			A-612		

B



B1	SF12	1/4" = 1'-0"	B2	SF11	1/4" = 1'-0"	B3	SF10	1/4" = 1'-0"	B4	SF9	1/4" = 1'-0"	B5	SF8	1/4" = 1'-0"	B6	SF7	1/4" = 1'-0"
A-612			A-612			A-612			A-612			A-612			A-612		

A



A1	SF6	1/4" = 1'-0"	A2	SF5	1/4" = 1'-0"	A3	SF4	1/4" = 1'-0"	A4	SF3	1/4" = 1'-0"	A5	SF2	1/4" = 1'-0"	A6	SF1	1/4" = 1'-0"
A-612			A-612			A-612			A-612			A-612			A-612		

1

2

3

4

5

6

GLAZING TYPES LEGEND	
TYPE	DESCRIPTION
GL1	1" INSULATED GLAZING
GL2	1" INSULATED GLAZING - IMPACT RESISTANT
GL3	1/4" NON-INSULATED GLAZING
GL4	1/4" NON-INSULATED GLAZING - IMPACT RESISTANT
GL5	SPANDREL GLAZING
GL6	SPANDREL GLAZING - IMPACT RESISTANT
GL7	1" INSULATED CERAMIC FRITTED GLAZING (ALTERNATE BID)
GL8	1/2" NON-INSULATED GLAZING
ACM1	ACM SOLID PANEL
---T	"T" DENOTES TEMPERED GLASS LOCATION



CAPE FEAR FD STONEWATER



101 NORTH THIRD STREET, SUITE 500  
WILMINGTON, NORTH CAROLINA 28401  
TEL. 910.790.9901 FAX. 910.790.3111  
WWW.LS3P.COM



NOT FOR  
CONSTRUCTION

NHC Government Center 7702-190810

NEW HANOVER COUNTY  
GOVERNMENT CENTER  
GOVERNMENT CENTER DRIVE  
WILMINGTON, NC 28403

LS3P PROJECT: 7702-190810

A	DATE	DESCRIPTION
A	2020.08.18	C-5 DESIGN DEVELOPMENT
B	2020.10.16	C-5 PERMIT SET
C	2020.12.16	GMP SET
D	2020.12.22	ADDENDUM #1

SHEET NAME:  
EXTERIOR  
STOREFRONT

ORIG SUBMISSION: 2020.12.16  
CURRENT: 2020.12.22  
ADDENDUM #1

SHEET:

A-612

GMP SET

12/22/2020 2:30:41 PM